

\$WING



ECOSYSTEM



REPORT

SHIBA INU LEGACY

01 INTRODUCTION

Meet \$WING, a token backed by the Shiba Inu Legacy Ecosystem. Proud owners of the Shiba Inu logo. Not just another meme token but the cornerstone of our loyalty and rewards programs and your gateway into a universe of exclusive rights, ownership & franchising opportunities all backed by our PREMIUM business partners and Celebrities to generate wealth for our beloved community.

Ticker: \$WING
Supply: 888,888,888.88888888
Network: Solana (SOL) Network



\$WING addresses key cryptocurrency challenges such as enhancing user engagement, ensuring transaction security, and broadening the token's utility beyond conventional markets. It aims to set new standards in how cryptocurrencies integrate with everyday life and consumer interactions.

TOKEN DISTRIBUTION:

For community engagement, loyalty incentives and events

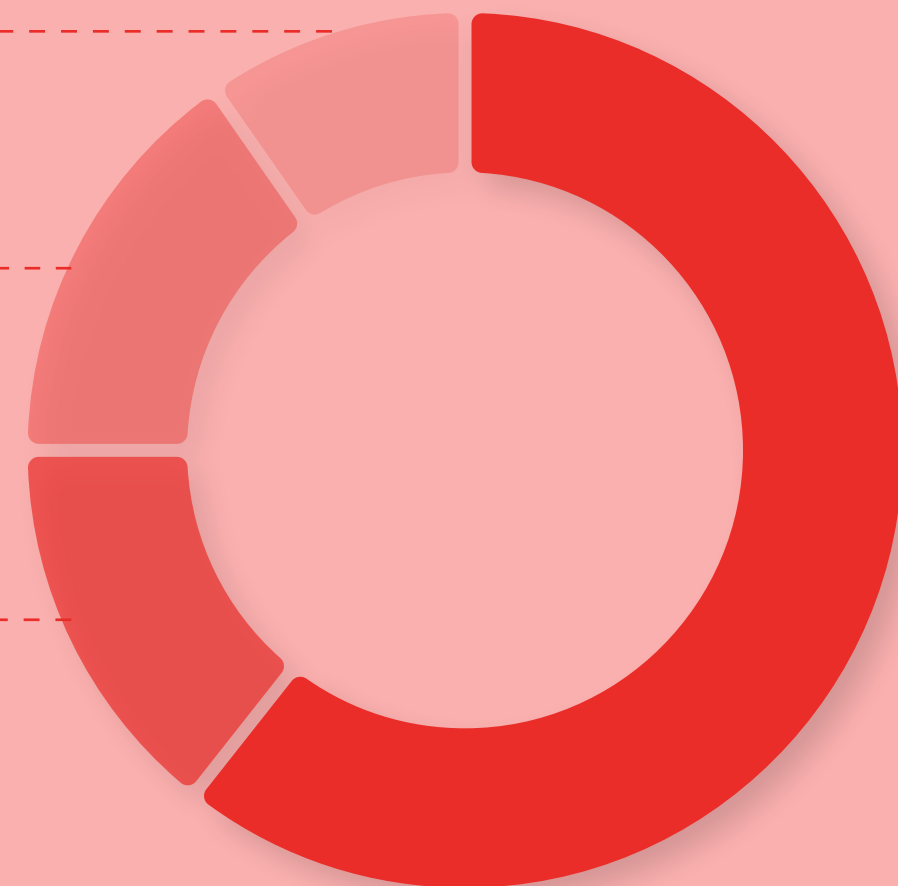
Airdrops
10%

Reserved for strategic investors

Allocations
15%

Tokens that remain within the company to support ongoing research, development and operation costs

**Foundation/
Company Holdings
& Burn**
15%



TAX INFORMATION:

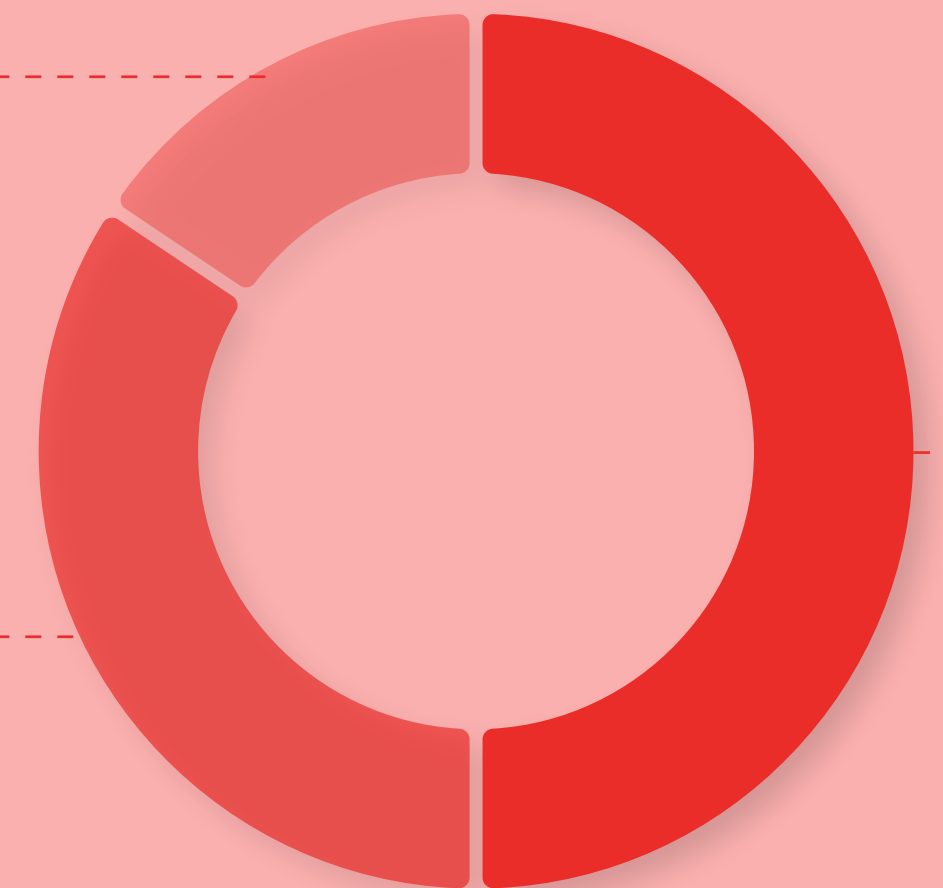
2% of each sell is collected as taxes:

50% Liquidity pool, **35%** Marketing, **15%** Free NFT holders for life

Free NFT Holders
15%

Marketing
35%

Liquidity
50%



Sale: Private & Presale
60%

\$WING offers a low tax environment that always contributes to the value of the token helping to create a sustainable ecosystem and further develop and expand the franchise model globally.

TOKEN HOLDERS

- Lifetime 15% discount at Shiba Wings Restaurants & Selected Mr Beast Burger locations worldwide (T&C Applies)
- Governance Participation
- Airdrop of \$WING tokens
- Loyalty incentives & events



NFT HOLDERS

Alongside the launch of \$WING, Shiba Inu Legacy will be releasing 500 Free NFT's to the community to revolutionize digital engagement and asset management through unique utilities, partnerships, and community-driven initiatives.

These initial NFTs will receive 0.3% of the tax on sales, fostering initial engagement and investment in the \$WING ecosystem.

- Lifetime 50% discount at Shiba Wings Restaurants & Selected Mr Beast Burger locations worldwide (T&C Applies)
- Discounts across a variety of businesses worldwide
- First access to future features (NFT drops, Defi, Franchise Opportunities, Real Estate, Business Ventures)
- Governance Participation
- Airdrop of \$WING tokens
- Exclusive Discord channels

Community Engagement: Foster a vibrant community through NFT ownership and active participation in the \$WING ecosystem.

Governance: Give NFT holders governance rights in Shiba Legacy DAO, enabling them to influence key decisions.

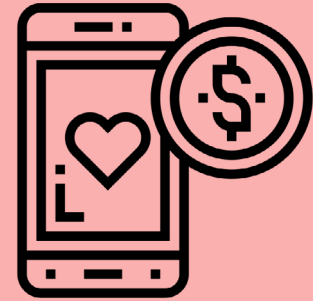
Incentivized Loyalty: Offer exclusive benefits and partner discounts to NFT holders, ensuring their continued engagement.

Redeemable Rewards: Exchange tokens for discounts, free items, or exclusive experiences.

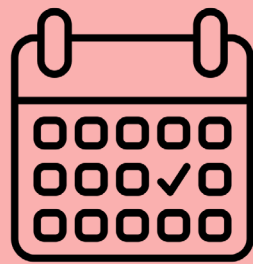
Gamification: Engage customers with token challenges, leaderboard rankings, and special events.

Word-of-Mouth Marketing: Incentivize customers to refer friends and family for extra token rewards.

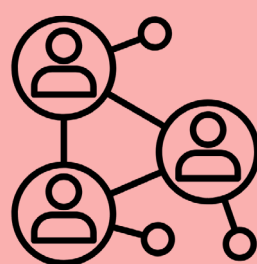
Brand Loyalty: Cultivate a loyal community actively participating in the Shiba Legacy rewards program.



Loyalty Program: Powered by the \$WING Token and NFTs, that rewards customers for interacting, referring friends, and participating in community events, and offers further rewards, discounts, and exclusive access, fostering a sense of belonging and loyalty among community members.



Community Events: Bring the Shiba Wings community together, whether online or in physical locations, to celebrate milestones, or new NFT launches.



Social Impact Initiatives: Engaging in social impact projects and charity events, contributing a portion of profits to community causes, and supporting initiatives that align with the brand's values of community and sustainability.

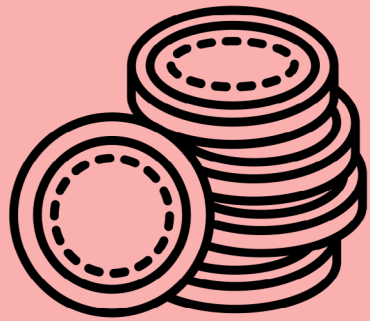
At the heart of Shiba Wings' innovative approach to redefining token utility is our groundbreaking path where technology and community converge. Our vision, embodied by the \$WING Token, is more than just a concept; it's a transformative force integrating cutting-edge blockchain technology to foster a deep, enduring connection with our patrons.



Investment in R&D: Allocating resources to research and development for continuous improvement of the technological platform, and community engagement strategies, ensuring the brand remains at the forefront of innovation.



Strategic Partnerships: Collaborating with tech companies, suppliers and retailers, and other businesses to expand the brand's ecosystem, leverage cross-promotional opportunities, and enhancing the customer experience through technology and innovation.



\$WING, is the native token behind our revolutionary rewards program. Shiba Inu Legacy aims to drive customer engagement, foster loyalty, and create a thriving ecosystem, aligning with our vision for the future.

Goal: Franchising, community ownership, liquidity, marketing and further expansion of brand partners globally, utilising the \$WING token as its currency.

Vesting Schedule: Applies only to investments that are 10k and over.

15% airdropped with 24hrs of launch then the following vesting schedule is applied:

(Released end of each calendar month)

Launch
within 24hrs

15% Airdrop
25% profit

1st Month

15% Released

4th Month

15% Released

2nd Month

15% Released

5th Month

15% Released

3rd Month

15% Released

6th Month

10% Released

TOKEN PRICE

Private Sale - 0.0075

Community Sale - 0.0095

Launch - 0.01

ADDITIONAL INVESTOR INFORMATION

INTRODUCTION

\$WING, the Shiba Inu Legacy Token, merges the cultural iconography of the Shiba Inu meme with an innovative blockchain platform on Solana. This token is not just a digital asset; it's an integral part of a broader ecosystem designed to revolutionize digital engagement and asset management through unique utilities, partnerships, and community-driven initiatives.

CORE FEATURES AND UTILITIES

Intellectual Property Ownership: As one of the original owners of the Shiba Inu logo, \$WING offers unique brand value and market recognition.

Comprehensive Utility: Integrates NFTs, exclusive membership benefits, and interactive gaming to enhance user engagement.

Economic Structure: Supported by a 2% sales tax that funds liquidity, marketing initiatives, and rewards for NFT holders, ensuring a sustainable economic model

STRATEGIC PARTNERSHIPS AND COLLABORATIONS

Restaurant Chain Integration: Collaborations with Shiba Wings and Mr Beast Burgers to integrate \$WING into food service operations, providing tokenized rewards and promotions.

Gaming and Entertainment Alliances: Partnerships with gaming platforms and celebrities to embed \$WING within various digital and real-world entertainment venues.

Technology and Innovation: Working with Pay It Now, \$WING integrates cutting-edge blockchain solutions to enhance transaction efficiency and security

Investor Benefits

Economic Incentives: Potential for substantial returns through innovative transaction tax redistribution and growth in token utility.

Exclusive Access and Perks: Ownership provides access to special events, discounts, and voting rights in the Shiba Legacy DAO.

Market Influence: Investors can shape the project's trajectory through active participation in governance and decision-making processes.

SHIBA INU LEGACY - \$WING

CONTRIBUTION TO THE CRYPTO ECOSYSTEM

\$WING addresses key cryptocurrency challenges such as enhancing user engagement, ensuring transaction security, and broadening the token's utility beyond conventional markets. It aims to set new standards in how cryptocurrencies integrate with everyday life and consumer interactions.

FUTURE PROSPECTS

The roadmap includes scaling the ecosystem through global expansion, enhancing the platform's features, and forging new partnerships that extend the token's reach and functionality. This strategic growth is designed to ensure \$WING remains at the forefront of blockchain innovation and community engagement.

CONCLUSION

The Shiba Inu Legacy Token is more than an investment; it's a stake in a burgeoning ecosystem poised to redefine how cryptocurrencies are perceived and used across various industries. With a solid foundation, robust growth strategies, and a commitment to innovation, \$WING is ideally positioned for success in the dynamic crypto market.



Shiba Inu Legacy stands at the forefront of a transformative journey. Together Shiba Wings & Mr Beast Burgers, and our other lucrative business partners, are merging the realms of blockchain technology with unprecedented utility and community experience. The introduction of the \$WING Token represents a significant leap forward, encapsulating the brand's innovative spirit. This bold integration is not merely a technical achievement but a redefinition of customer engagement and loyalty, setting a new benchmark for the industry.

Join us as we aim to soar beyond the ordinary and build a Legacy together, one \$WING at a time.

THANKS!

SEE YOU ON THE MOON!

